



West Park Primary School

Prospectus

Inspiring Learning for Brighter Futures



Devon Road, Wolverhampton, WV1 4BE
01902 558238

www.westparkprimaryschool.co.uk

Welcome

Dear Parents and Carers,

On behalf of everyone at West Park Primary School, I welcome you to our school and hope that you will enjoy discovering what makes our school so special. We are a welcoming and vibrant school that prides itself on serving a diverse community where we learn from each other every day.

Our highly skilled and dedicated staff team work in partnership with families to ensure they develop the whole child as well as pursue academic excellence. We work hard to help all children in our care grow and flourish in a safe, happy, and nurturing environment as confident individuals with high personal aspirations and a lifelong love of learning.

We promote a 'growth mindset' attitude and adopt a solution-focused approach to overcome obstacles and enable all children and adults to achieve their full potential. We encourage children to be confident, independent learners who understand that achieving success requires effort, practice and resilience and that making mistakes is an essential part of the learning process.

Every child is encouraged to 'thrive' in all they do. We place great emphasis on children showing good manners, integrity, being respectful and always 'choosing kind' so that they become positive and active citizens.

Through our Visible Learning approach pupils know what good learning is and actively seek feedback. We do not accept underachievement for any child and are relentless in our pursuit of accelerated ambitious learning.

As a school we continually seek ways to improve through training, learning from best practice, partnership working and constantly reflecting on what we do as we improve child outcomes.

Azizan Kabil
Headteacher



Our Vision

Inspiring Learning for Brighter Futures



At West Park Primary School, we enable our children to **thrive**.

Together, we encourage children to be **honest**, **respectful** and ensure they feel **valued** as individuals.

We celebrate diversity and **inspire** academic **excellence** through our Visible Learning approach and engaging curriculum.

We nurture active, resilient, feedback-seeking learners, who take ownership of their progress in all subjects.





Safeguarding

Safety of children is our number one priority, from security of the site to the welfare of each individual. We have very clear guidelines in place to ensure our safeguarding is robust. We ensure that all staff, volunteers and visitors have current DBS checks before working with children. We have a number of policies and procedures in place that contribute to our safeguarding commitment, including our Child Protection Policy which can be viewed on our website.

Safeguarding Contacts in School

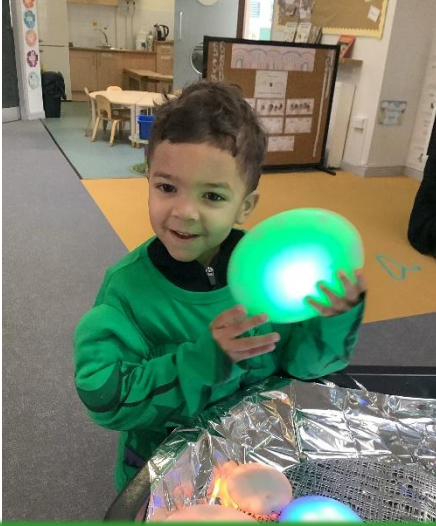
Designated Safeguarding Leader – **Mrs Azizan Kabil** (Head Teacher)

Deputy Designated Safeguarding Leader – **Mrs Sarah Andrews** (Deputy Head Teacher)

Deputy Designated Safeguarding Lead- **Ms Jenny Hawkins** (Assistant Head Teacher)

Deputy Designated Safeguarding Lead- **Ms Annette Smith** (Pastoral Lead)

More information can be found on our school website: [Safeguarding | West Park Primary](#)



Early Years

Our Early Years phase ensures all children have a strong start to their educational journey.

Both Nursery and Reception have large spacious classrooms with access to a covered outdoor area.



A Typical Day in EYFS

Meet and Greet

Family Group

Write Dance/Handwriting

Whole Class Carpet Session

Small Group Work

Outdoor Play and Physical Development

Phonics Session

Story Time

Lunch

Whole class carpet session

Child initiated learning

Story Session

Home time



Early Years Curriculum



The areas of learning that we focus on in Early Years are:

Personal, Social and Emotional Development

– Making relationships, self confidence and self-awareness, managing feelings and behaviours.

Communication and Language

– Listening and attention, understanding and speaking.

Physical Development

– Moving and handling, health and self-care.

Literacy

– Reading and writing.

Numeracy

– Numbers, shapes, space and measures.

Understanding the World

– People and communities, the world, technology.

Expressive Arts and Design

– Exploring and using materials, being imaginative.

More information can be found on our school website: [Early Years Curriculum](#) | [West Park Primary](#)

Timetable

<u>Key Stage 1</u>		<u>Key Stage 2</u>	
8.30- 9	Registration	8.30- 9	Registration
9 – 9.45	Session 1	9 – 9.45	Session 1
9.45- 10	Assembly	9.45- 10	Assembly
10 – 10.15	Playtime	10 – 10.15	Playtime
10.15 – 11	Session 2	10.15 – 11.15	Session 2
11 – 11.50	Session 3	11.15– 12.20	Session 3
11.50 – 12.30	Lunchtime	12.20 – 1	Lunchtime
12.30 – 1.10	Session 4	1-2	Session 4
1.10- 2	Session 5	2-2.20	Session 5
2 – 2.15	Play Time	2.20 – 3.20	Session 6
2.15 – 3.15	Session 6	3.15 – 3.30	Story Time
3.15 – 3.30	Story Time	3.30	Home Time
3.30	Home Time		



School finishes at 1pm on a Friday.





Breakfast Club & After School Club

A school run breakfast club runs each day from 8am until 8.30am. It is staffed by our own staff and costs £2 per family per week. The children get a choice for breakfast which includes cereal, bagels and beans on toast. The children have plenty of activities to keep them busy during breakfast club.

We have an after school club, which runs from 3.30pm-4.15pm. The cost is £3 per day.

There are a variety of after school activities run by staff from the school.

More information can be found on our school website: [After School Activities & Clubs | West Park Primary](#)

Breakfast Bagel

At West Park Primary School, we provide a free breakfast bagel each morning between 8.30 – 8.45 for every pupil from reception to year 6 to ensure pupils are fuelled for learning.

School Milk

A carton of milk is available for each child daily at a cost of £12 per term. Milk money is paid termly and is non-refundable. Those who are entitled to free school meals and the under fives are entitled to free milk.

School Meal

There is a good variety of healthy meals, and a salad bar, available each day including vegetarian and halal options. Dinners are cooked by Shire Services who use fresh fruit and vegetables daily; KS2 children also have great choices from a deli bar.

A school meal can be purchased at the cost of £2.40 per day. Dinner money is paid online. All children in Reception, Years 1 and 2 are entitled to universal free school meals. Children may also bring a healthy packed lunch to eat at school.

If you have a child in years 3, 4, 5 or 6 and you think they may be entitled to free school meals then call in at the school office and fill in an application form, which we will process for you.

The school operates online payments via **School Gateway** and aims to be as cashless as possible.

Attendance

Good attendance and punctuality help the children to settle in school and not miss out on vital learning and social experiences.

Children with poor attendance can fall behind and catching up can be tricky. It is the parents' responsibility to ensure that there is good attendance.

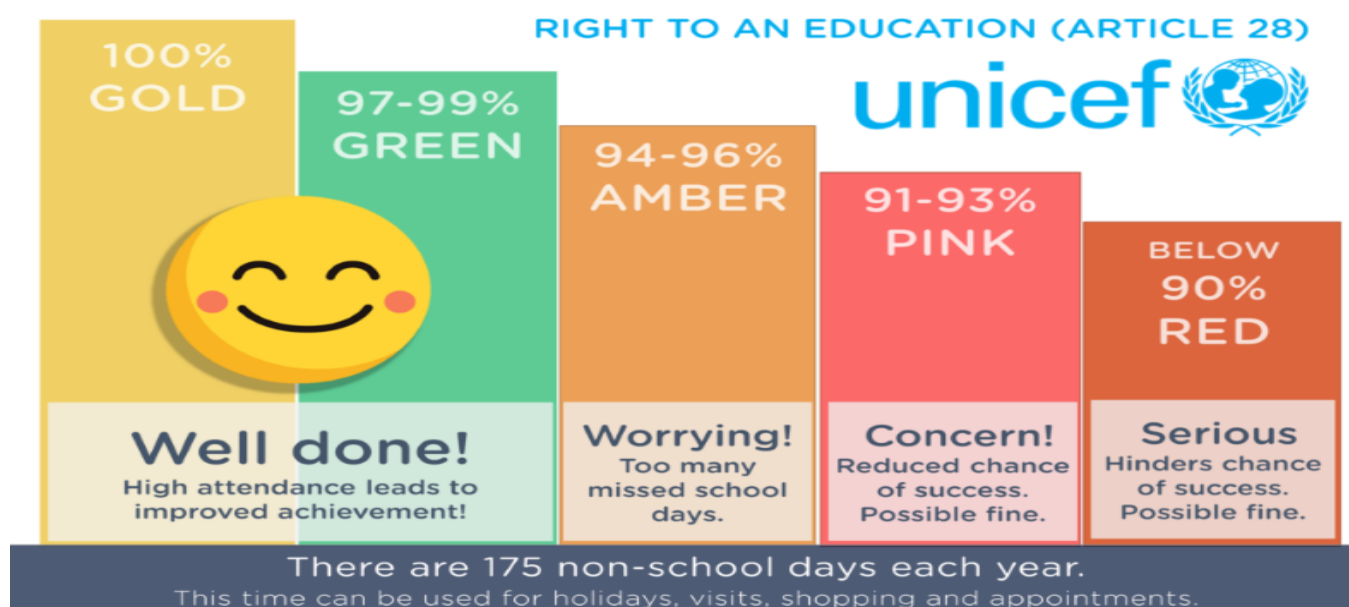
The senior leadership team monitor attendance and will contact parents should they become concerned. Children need to be in school everyday unless ill or there are exceptional circumstances. We expect every child to have a minimum attendance of 96%.

Doors open at 8.30am. Registers close at 8.55am. After that, children will need to go via the office and will receive a late mark. School finishes at 3.30pm (1pm on a Friday) each day and parents should collect from the playground.

If your child is ill, you must call the school office to let them know what symptoms they have and when you expect them to return. Appointments for dentists / opticians / doctors etc should, wherever possible, be made out of school hours. If this is not possible the child should come to school beforehand and should be returned to school as soon as possible afterwards. Where appointments are booked, parents must inform the office. Holidays during term will not be authorised and could result in parental fines.

Visit our school website for more information about attendance:

<https://www.westparkprimaryschool.co.uk/attendance>





Curriculum

Pupils at West Park are well behaved and have excellent learning attitudes. West Park is a visible Learning School and we aim to inspire and enthuse children to be self aware learners that take an active interest in their own learning.

The curriculum, by design, allows and encourages children to learn how to speak out with confidence whilst respecting the views of others in a safe and secure environment. Across the school, we follow the National Curriculum and a cross curricular approach to learning. Wherever possible clear links are made between subjects and each term classes have a different topic focus.

Across each year group, we ensure that children are taught a balance of the different subjects, focusing on the key skills, knowledge and understanding needed at the appropriate age. Each subject has a carefully planned and progressive sequence of learning. Carefully chosen schemes of work are used and adapted by or staff to ensure enjoyable and memorable learning. Learning is enhanced through trips and workshops throughout the year.

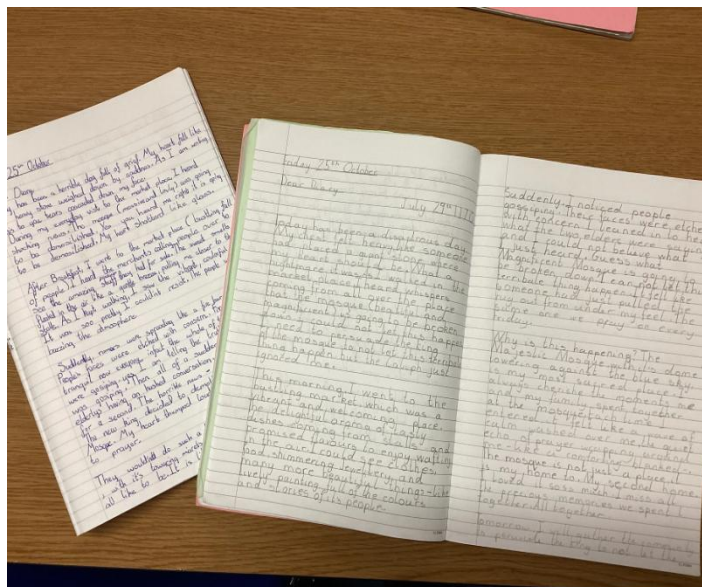
Children have two hours a week of PE a week. Children experience orienteering, gym, dance, striking and fielding, invasion games and athletics. Pupils have the opportunity to attend a residential in years 2, 4 and 6. In Year 4, children have swimming lessons that take place at a local swimming pool.

For more information please look at the website: [Visible Learning | West Park Primary](#)

Detailed information about our curriculum is available on the website: [Subjects | West Park Primary](#)

English

Learning to read and write is key to children accessing the wider curriculum at school. Reading and writing starts from the moment your child starts school: looking at picture books, learning phonics and developing secure letter formation and this develops through to year 6 where pupils are able to read confidently and write a range of independent pieces.



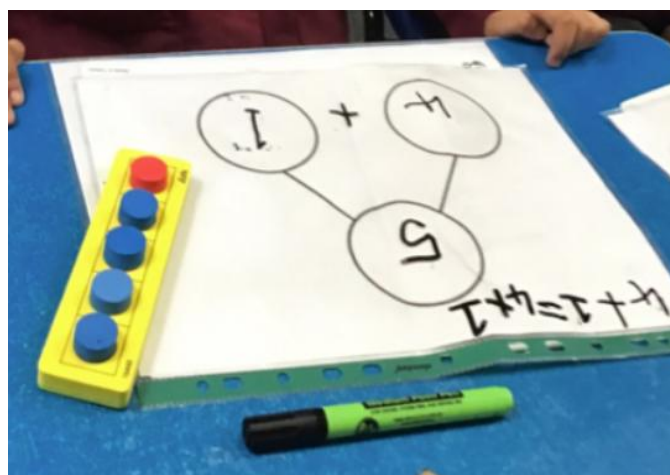
We encourage children to have a love of reading and to share books from the classroom library. We send home books each week so children can practice reading at home.

In Early Years and Key Stage 1, reading is taught through phonics using the West Park Phonics programme and Floppy Phonics reading scheme alongside one another. From Year 2, children are taught in both whole class and smaller guided groups, where children focus on vocabulary, fluency and comprehension skills.

Writing is taught daily incorporating drama, speaking and listening and grammar. Pupils are taught to construct sentences and accurately punctuate their writing. Spelling is taught weekly through the learning of specific patterns. Words are sent home for children to learn each week. Handwriting is taught daily in Early Years and Key Stage 1 through letter families. In Key Stage 2, children are taught handwriting weekly with a focus on fluency and presentation.

Maths

At West Park, we are invested in providing first class maths education for each and every child. In order to achieve this, we use a Maths Mastery approach. We have high expectations for every child. Teaching for mastery in Maths is essentially the expectation that all pupils will gain a deep understanding of the maths they are learning. For understanding in maths to be secure, learning needs to be built on solid foundations.



A mastery approach to the curriculum means pupils spend far longer on fewer key mathematical concepts whilst working at greater depth. Problem solving is central and opportunities are given for pupils to calculate with confidence, ensuring an understanding of why it works so that pupils understand what they are doing rather than just learning to repeat routines without grasping what is happening.

Uniform

All of our uniform can be purchased from Crested school wear.

https://www.crestedschoolwear.co.uk/product-category/schools/v-z/west_park_primary_school/

Children are expected to look smart at West Park Primary School and all staff are expected to support the uniform policy. Each child is allocated a locker to store their coat, PE kit and book bag.

	Expectations
Winter	White Polo shirt branded or unbranded Green sweatshirt branded or unbranded Grey trousers or skirt Black Shoes Black or grey hijab Year 6 pupils: V – neck Jumper branded or unbranded White shirt Green and gold tie Grey trousers or skirt Black Shoes Black or grey hijab
Summer	White Polo shirt branded or unbranded Green sweatshirt branded or unbranded Grey shorts or skirt Black Shoes Black or grey hijab Green Gingham Dress
PE	White T-shirt (branded or unbranded) Black shorts or jogging bottoms Black pumps (Indoor) optional Trainers (Outdoor)



SEND

School SEND Team: Ms Hawkins (Special Educational Needs Co-ordinator)

Miss Martin Harvey (Deputy Special Educational Needs Co-ordinator)

Mrs Dowdeswell (HLTA and SEND Assistant)

The SEND team supports class teachers in preparing plans for those children who have been identified as having special needs. The implementation of plans and children's progress is regularly monitored. Parents/carers are involved in this process.

If children do not make the expected rate of progress or are working two years below their current year group, then they may be referred to outside agencies to be supported by other professionals such as an Educational Psychologist, Learning Support Teacher or specialist workers, in order to meet a child's needs.

For further information visit our school website:

https://www.westparkprimaryschool.co.uk/_files/ugd/4eddf1_877aac44bd1841a2b9d73a0affa4faf8.pdf

Inclusion

We operate a fully inclusive ethos in school. No child will be omitted from an activity or lesson on the grounds of gender, race, disability, medical needs or special needs unless it is for reasons of the safety of themselves or others.

If risk cannot be eliminated, then parents will be informed and the best way forward can be discussed. Pupils with disabilities have full access to all educational and associated services, in line with the Special Needs and Disability Act (2001).

Behaviour



Good behaviour, kindness and showing respect for others and their property is required by all children in and out of class.

We expect all children to be ready, respectful, responsible and safe.

Our restorative approach and Reflexion Zone, enables children to take responsibility for their actions.

Positive behaviour is rewarded in a variety of ways through the Privilege Medals, Afternoon Tea every week with the Headteacher or SLT, extra play every Friday, termly certificates and WOW activities.

Minor incidents of poor behaviour choices are dealt with by any member of staff who witnesses them. Behaviour which infringes the rights of other pupils is dealt with in line with the school's Behaviour Policy which can be viewed on the school website.

Bullying

We promote an atmosphere of mutual respect regardless of gender, family circumstances, ability, race and religion or anything else.

Anti-bullying messages are delivered in assemblies and in class. Children are taught that bullying is when something happens several times on purpose (S.T.O.P) and not one-off incidences where children are rude or mean. They are also taught how to report bullying.

The staff, pupils and governors are opposed to all bullying. If bullying is suspected, it is dealt with immediately. Parents are encouraged to contact the school if they have any concerns.

Our Anti-Bullying Policy is available on the school website.

Admissions

Admissions to Nursery

At West Park Primary School, we admit children into our Early Years Unit to begin their nursery education at the beginning of the term after they turn three years old. There are 78 full time places. 39 morning places and 39 afternoon sessions.

Children aged three and four years are entitled to attend the Early Years Unit for three hours each day in school term time free of charge.

Admission to the school's Early Years Unit does not guarantee a full-time school place in Reception. Reception places are allocated by the Local Authority NOT the school.

Applications to Nursery will be considered on a termly basis and parents will be informed as to whether or not there will be a place available for their child at the beginning of the term before their child attains their third birthday.

Priorities for admission:

In the event of there being more applications for places than there are places available, the following criteria will be used to allocate places:

1. Children with a statement of Special Educational Need that names West Park Primary School
2. Looked after children who are in the care of the Local Authority
3. Children who have siblings who are already attending West Park Primary School. *The definition of a sibling is: a brother or sister sharing the same parents, a half brother or sister, where two children share a common parent, step brother or step sister.*
4. Children who live closest to the school as measured in a straight line from the child's home address to the entrance to the Early Years Unit. *The child's home address is the address where the child is considered to be permanently resident. The address must be the child's only or main residence. Documentary evidence may be required.*

Admissions to Reception

Pupils are admitted to full-time school in accordance with the Local Authority admissions policy.

Key Stage One: Years 1 and 2 have 30 children in each class. Key Stage One caters for 5-7-year-olds.

Key Stage 2: Years 3, 4, 5 and 6 have 34 pupils in each class. Key Stage Two caters for pupils aged 7-11 years old.

All prospective parents are welcome to visit the school at any time, however, if they would like to discuss the school with the Headteacher it is best to make an appointment. Please call the school office to make an appointment.

More information on admissions can be found here: <https://www.westparkprimaryschool.co.uk/admissions>

Local Authority Admissions: <https://www.wolverhampton.gov.uk/education-and-schools/school-admissions>

Transition Week



In the final week of term, all children, including our new Reception children, spend the final week of term with their new teacher. This allows your child to transition from home or from an old classroom to their new classroom. Your child will meet their new teacher and learn about their new class environment so they will know what to expect and there will be no worries over the summer holidays and on the first day back in September.

If your child is starting reception for the first time, they will have a transition period to allow them to get familiar with school and not feel too overwhelmed.

